

9696/31

May/June 2024

1 hour 30 minutes

- This insert contains all the resources referred to in the questions.
- You may annotate this insert and use the blank spaces for planning. **Do not write your answers** on the insert.



DC (KS/CT) 339612/2
© UCLES 2024

[Turn over

Fig. 1.1 for Question 1

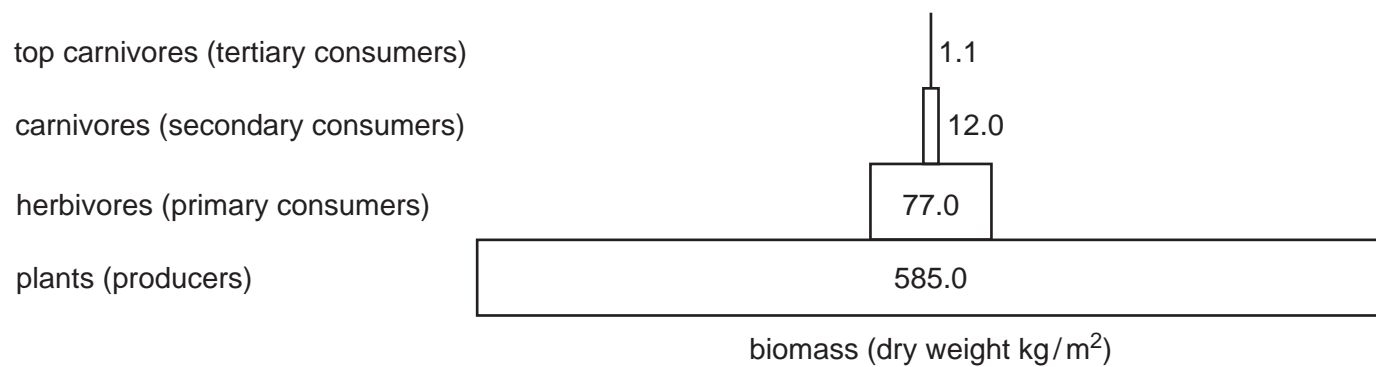
Pyramid of biomass for a seasonally humid tropical (savanna) ecosystem

Fig. 4.1 for Question 4

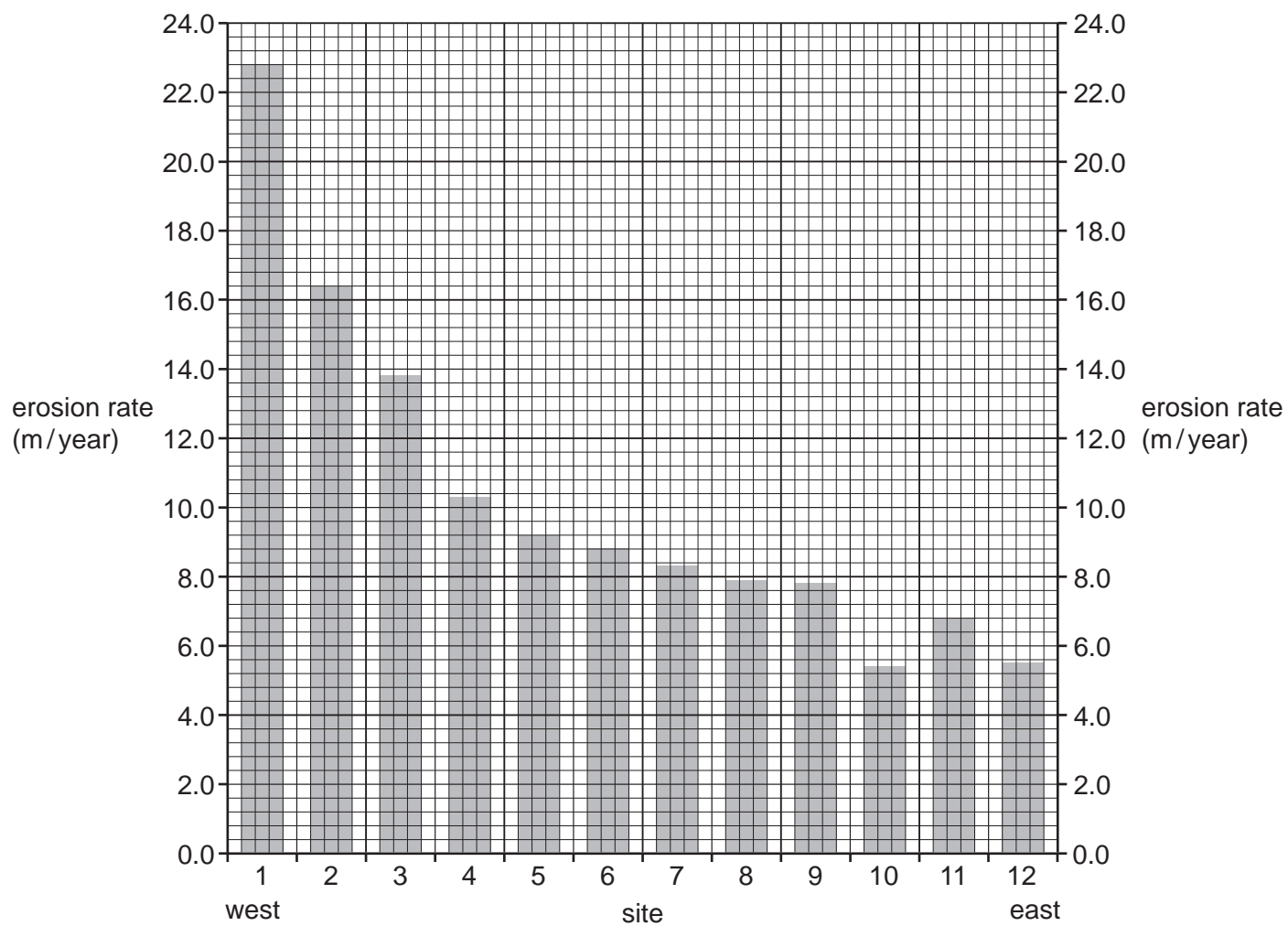
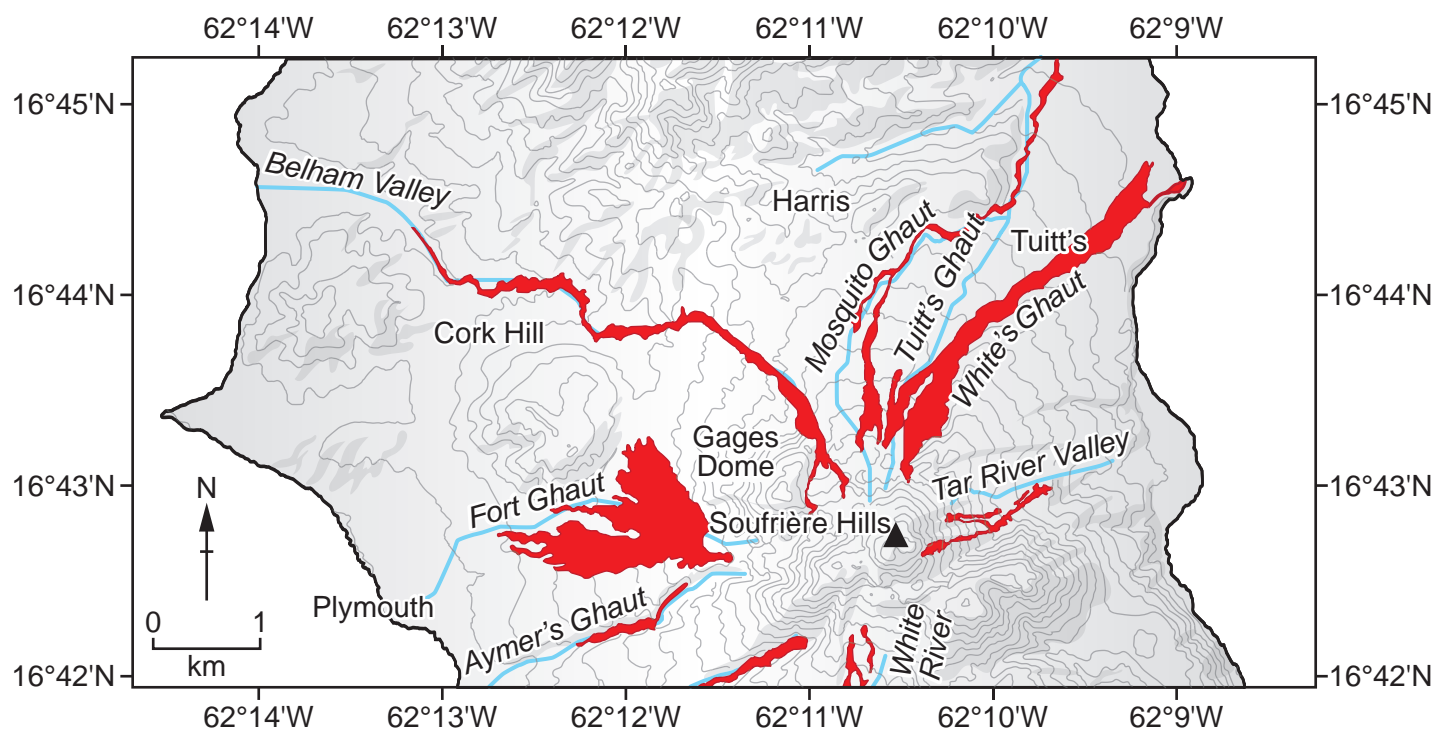
Erosion rates along a section of a barrier island near Lagos, Nigeria, 2001–13

Fig. 7.1 for Question 7

Pyroclastic flows from Soufrière Hills volcano, Montserrat, 8 January 2010

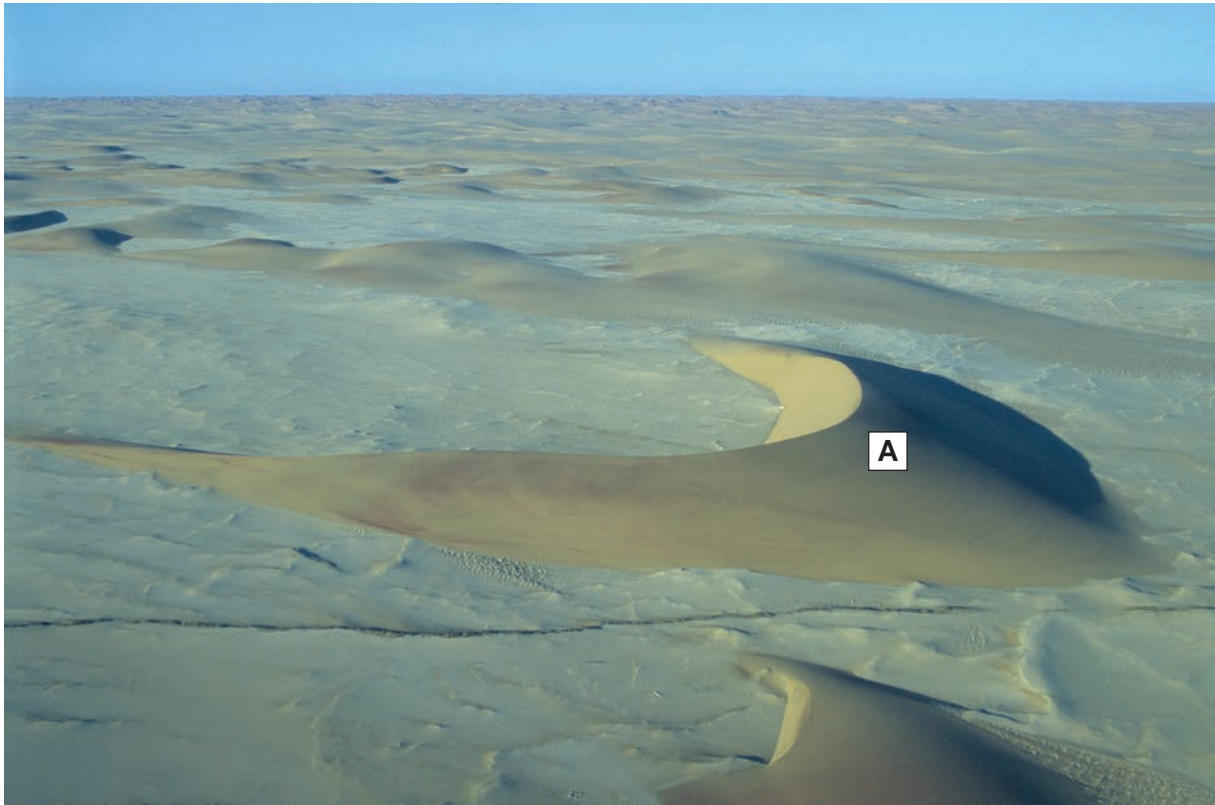
**Key** pyroclastic flow volcano river

contour interval: 50 m

5

Fig. 10.1 for Question 10

Hot arid landscape in Namibia



BLANK PAGE

BLANK PAGE

BLANK PAGE

The boundaries and names shown, the designations used and the presentation of material on any maps contained in this question paper/insert do not imply official endorsement or acceptance by Cambridge Assessment International Education concerning the legal status of any country, territory, or area or any of its authorities, or of the delimitation of its frontiers or boundaries.

Permission to reproduce items where third-party owned material protected by copyright is included has been sought and cleared where possible. Every reasonable effort has been made by the publisher (UCLES) to trace copyright holders, but if any items requiring clearance have unwittingly been included, the publisher will be pleased to make amends at the earliest possible opportunity.

To avoid the issue of disclosure of answer-related information to candidates, all copyright acknowledgements are reproduced online in the Cambridge Assessment International Education Copyright Acknowledgements Booklet. This is produced for each series of examinations and is freely available to download at www.cambridgeinternational.org after the live examination series.

Cambridge Assessment International Education is part of Cambridge Assessment. Cambridge Assessment is the brand name of the University of Cambridge Local Examinations Syndicate (UCLES), which is a department of the University of Cambridge.